

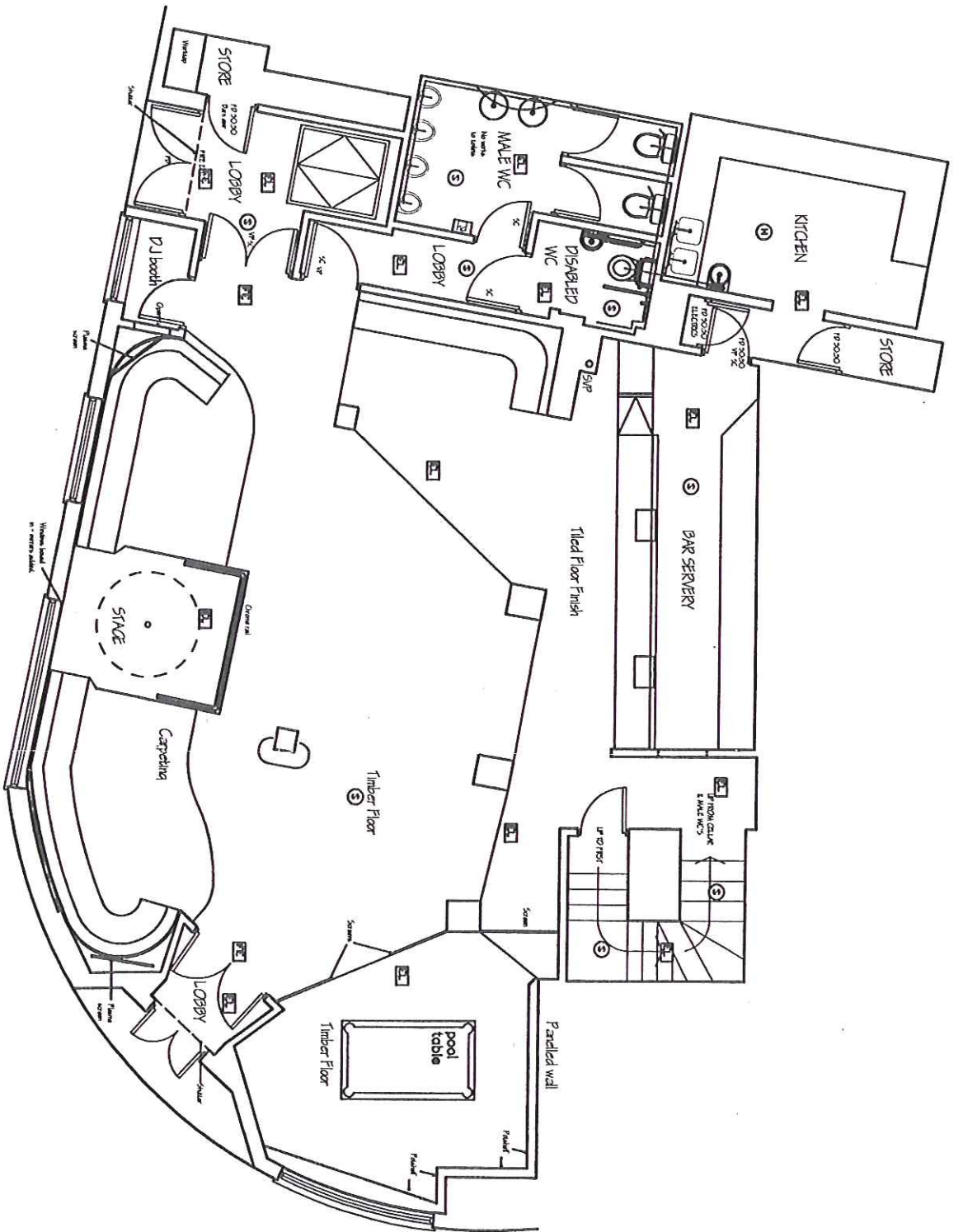
- Map**
- ▲ Land and Property Points
 - ▲ Adjacent Local Authorities
 - Barnsley District
 - Bassetlaw District
 - East Riding of Yorkshire
 - North Lincolnshire
 - Rotherham District
 - Selby District
 - Wakefield District
 - Local Authority Boundary (2004)
 - Output Areas (2001)
 - OS MasterMap Area Layer
 - OS MasterMap Area Layer
 - Buildings
 - Structures
 - Heritage And Antiquities
 - Land
 - Roads and Tracks
 - Roads and Tracks - Roadside

NOTES

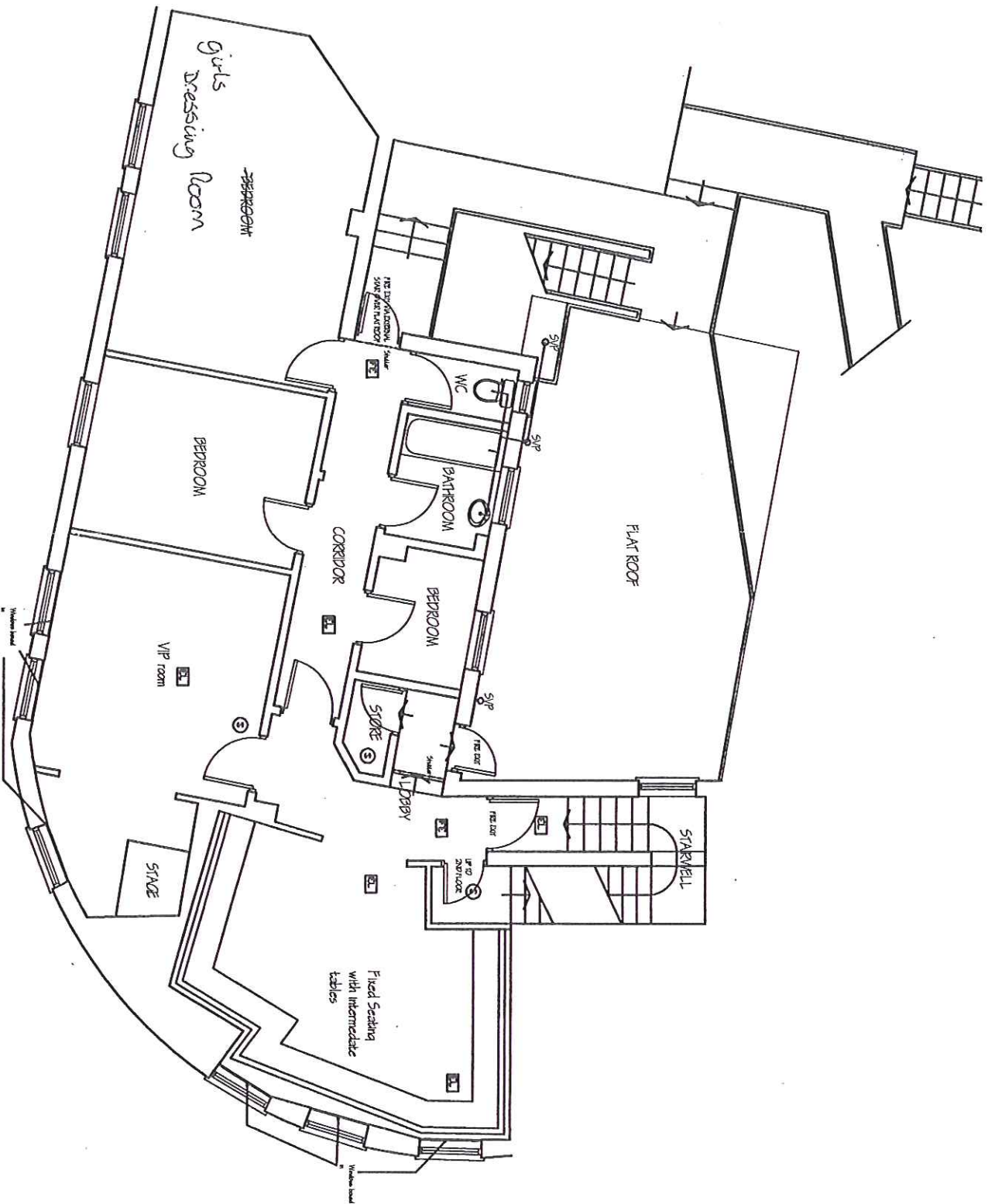


Crown Copyright Licence Number 100019782
 Map supplied by Doncaster Council Interactive Maps service - <http://InteractiveMaps/>

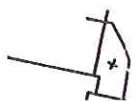
This map is reproduced from Ordnance Survey material with the permission of Ordnance Survey on behalf of the Controller of Her Majesty's Stationery Office Crown Copyright 2009. Unauthorised reproduction infringes Crown copyright and may lead to prosecution or civil proceedings. Cities Revealed aerial photography copyright by The GeoInformation Group, 2009 and Crown Copyright. All Rights Reserved.

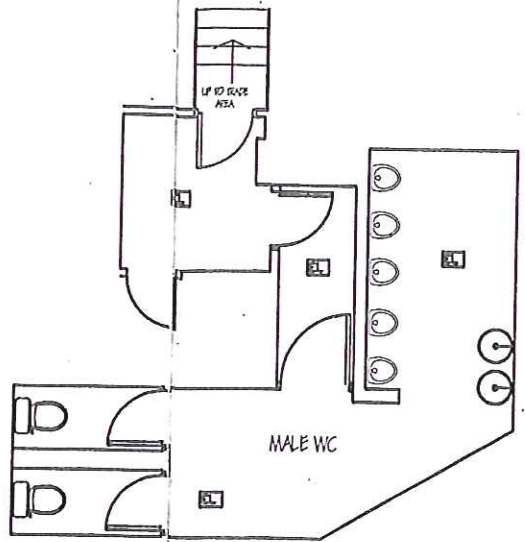


SCALE 1:100
GROUND FLOOR

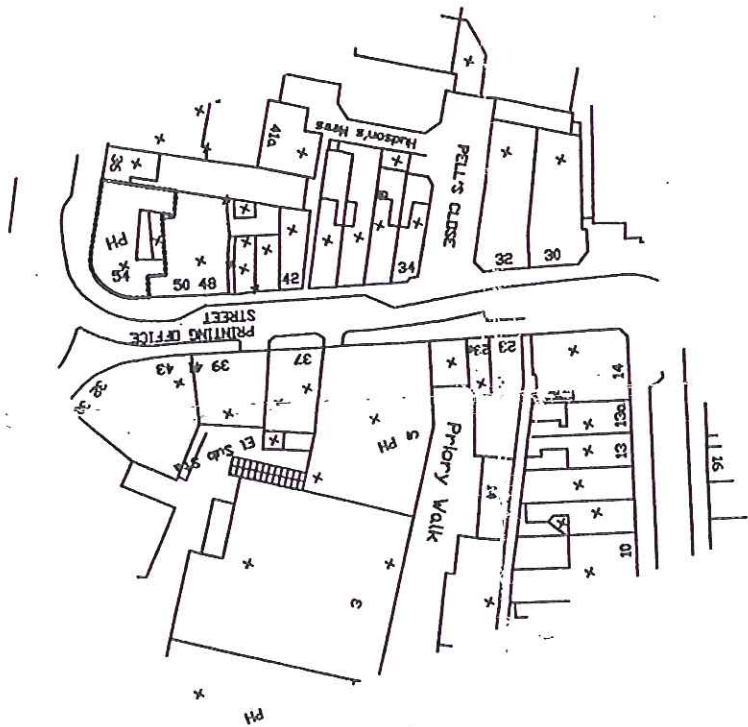


SCALE 1:100
FIRST FLOOR





SCALE 1:100
PART CELLAR FLOOR



INDICATIVE ONLY

